

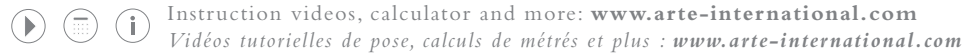
A close-up, low-angle shot of a textured, light-colored fabric surface, possibly a curtain or wall covering, with a dark, solid-colored surface visible in the upper right corner. The fabric has a fine, woven pattern and is draped, creating a sense of depth and texture. The lighting is soft, highlighting the intricate details of the material.

CANTALA

Cette collection célèbre la beauté pure des matériaux naturels tels que le sisal, le raphia et le papier. L'aspect authentique et gracieux de ces produits est primordial. La collection doit son nom à l'Agave cantala, une plante exotique de la famille Agave.

CANTALA

Width / *Largeur*: 48500 - 48545: 90 cm (35.43"), 48550 - 48564: 91,44 cm (36.00")
Sold by the linear metre/yard / *Livré au décapage*



The portrayed colours may differ from reality. *Les couleurs représentées peuvent différer de la réalité.*

String # 48542

ARTE®

www.arte-international.com

ARTE®

wallcoverings for the ultimate in refinement



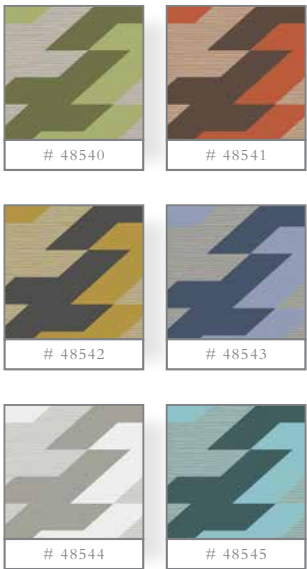
48534

Collection CANTALA
Pattern COMBO



48540

Collection CANTALA
Pattern STRING



48520

Collection CANTALA
Pattern CRAFT

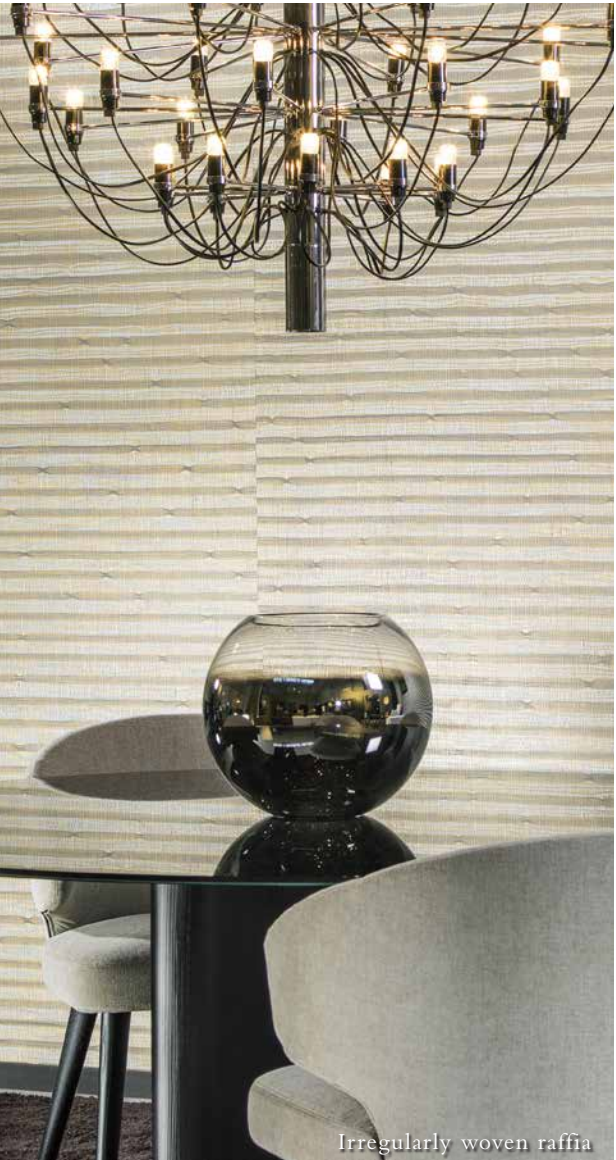


The panelling effect, characteristic of authentic sisal wallcovering, is balanced nicely by means of the controlled production process.



48552

Collection CANTALA
Pattern PAPYRUS



48560

Collection CANTALA
Pattern RAPHIA

